



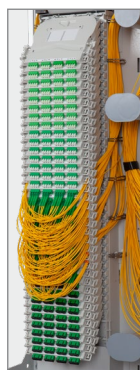
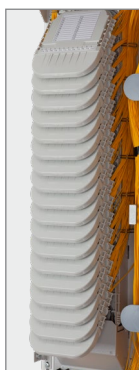
MICOS

FiberRoad

GPON READY

5G READY

Central Office MDO Cabinet Solution



FTTH **RISER** **PON** **RISER** **G.657A** **SC/APC** **PON** **1:8** **FTTH** **PATCHCORD** **RISER** **G.657A** **SC/APC** **FTTH**
QUICKPUSH SPLITTER PLC

TECHNICAL DESCRIPTION

The Central Office Solution using the Fiber High Density Cabinets MDO and the FibeRoad™ System is very variable and can be adapted to meet the majority of fiber optic network requirements. All the cabinet parts, such as the side panels, the door or the subracks, are optional accessories and can be gradually added to meet the current network requirements.



MDO Subrack

The MDO cabinets can be stacked sideways or back to back and lined up in rows connected to each other using an integrated roof panel cable tray. The cabinets are also fitted with grate holders on the side, which makes the cabinet row assembly easier. Cables can also be installed outside the cable trays.

The solution can be based on 3 types of cabinets – MDO 900, MDO 600 and MDO 300 – each using different assembly and a different number of subracks that can be fitted in.

- ▶ MDO 900 can be fitted with up to four subracks with a patch cord ranging management section placed between them.
- ▶ MDO 600 can be fitted with two subracks. But if it is only used for splicing and both sides are used, it can be fitted with up to four subracks.
- ▶ MDO 300 can be assembled in two ways – fitted with two subracks or only as a patch cord ranging management section.

All connections in the MDO cabinets are made using 4m patch cord.

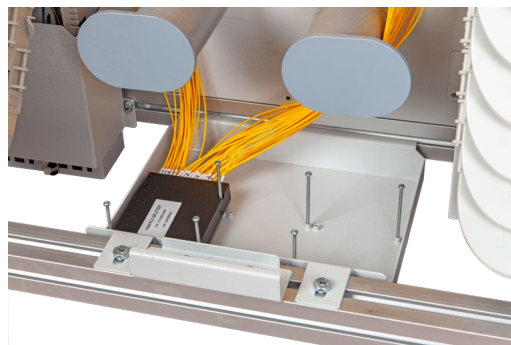
Each subrack contains a fiber organizer supporting easy cable termination and the division of fibers into particular splice trays. The cabinet can also house any spare fibers or small format PLC Splitters. The fiber organizers completely replace cable splitter functionality without drawing fibers and buffers into protective tubes.

Each subrack contains 36 holders that can be fitted with the same number of KM 4, KM 6 and KM 7 trays or with a half number of KM 5 trays. The trays can be combined within one subrack according to requirements.

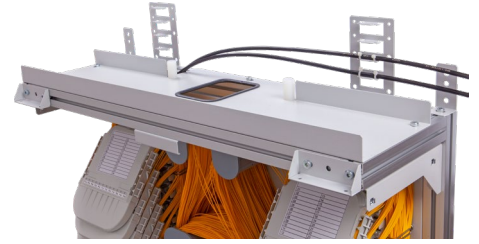
A splitter box is an optional accessory to MDO 900 and MDO 600 cabinets and can be additionally installed anytime. It enables using PLC Splitters ABS. As splitter modules reducing the overall cabinet capacity are not necessary to be installed, the entire cabinet capacity can be used for customer ports. The splitter outputs are 4 m long and enable connecting any port within a cabinet. The maximum capacity is 9 splitters 1:32 or 1:64.

Other benefits include:

- ▶ FibeRoad™ System, more info in the [FibeRoad™ Solution](#)
- ▶ Suitable for ribbon fibers
- ▶ Scalable according to network requirements (modular solution)
- ▶ No initially predefined network requirements, adaptable according to current needs
- ▶ Increased corrosion resistance (aluzinc)



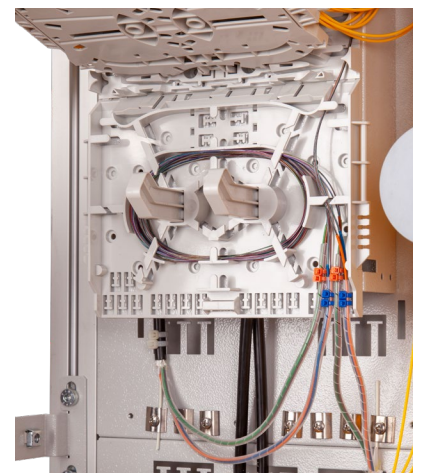
MDO Splitter Box



MDO 900 Roof Panel



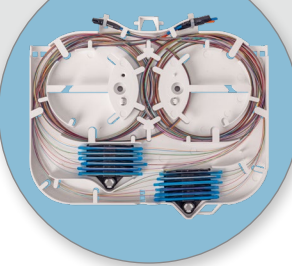
MDO Subrack
(tray combination)



Fiber Organizer (Subrack A)

Central Office MDO Cabinet Solution

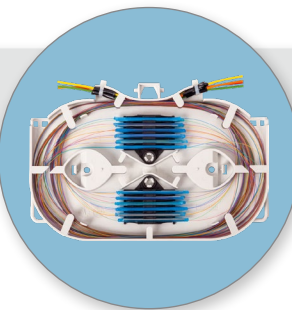
5



KM 4

- For splicing
- Up to 24 splices

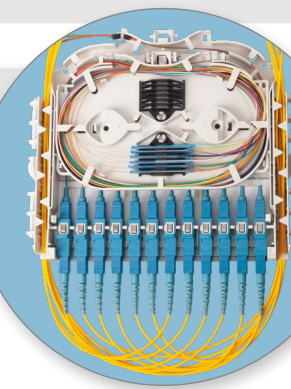
6



KM 6

- For splicing
- Up to 24 splices

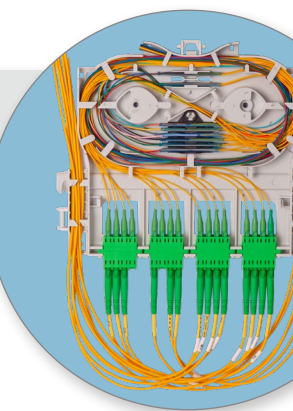
7



KM 5

- For adapters
- Up to 12x SC / 24x LC connector
- Up to 24 splices

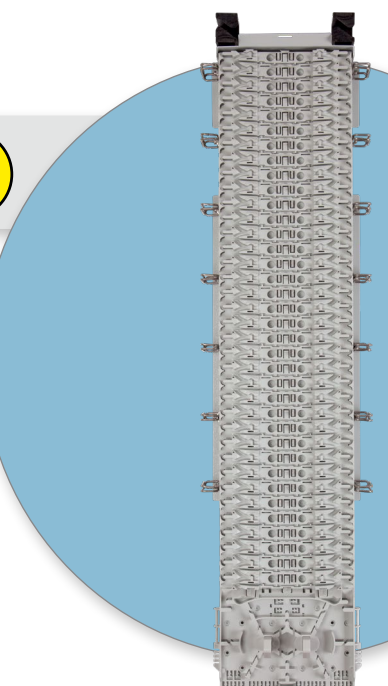
8



KM 7

- For adapters
- Up to 8x SC / 16x LC connector
- Up to 16 splices

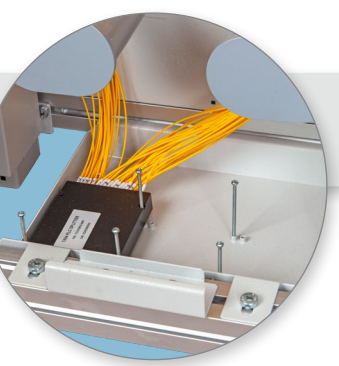
4



MDO Subrack

- Capacity of up to 864 splices (for KM 4)
- Capacity of up to 216x SC / 432x LC connector (for KM 5)
- Capacity of up to 288x SC / 576x LC connector (for KM 7)
- Ability to mix & match the Fiber Optic Trays KM 4, KM 5, KM 6, KM 7
- Ability to gradually add trays as required
- Modular solution without cable splitter functionality
- Optional placing of PLC Splitters (outside a tray)
- FibeRoad™ System compatible
- Suitable for ribbon fibers

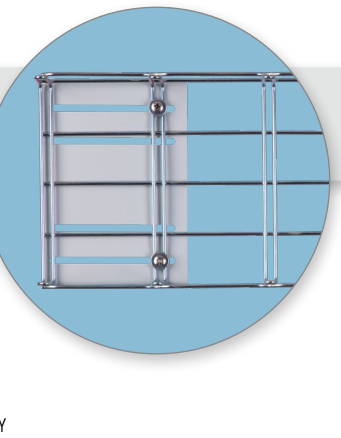
4B



MDO Splitter Box

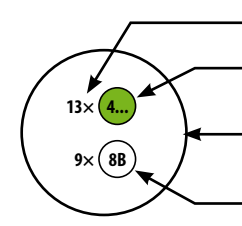
- Optional accessory
- Up to 9 PLC Splitters ABS
- Length 4 m
- Cabinet capacity is not reduced by splitter modules

4C



MDO Grate Holder (assembly)

- Optional accessory
- Universal holder for various cable trays
- Support for aisle cabinet configuration
- Direct cable tray mounting without installing ceiling cable trays

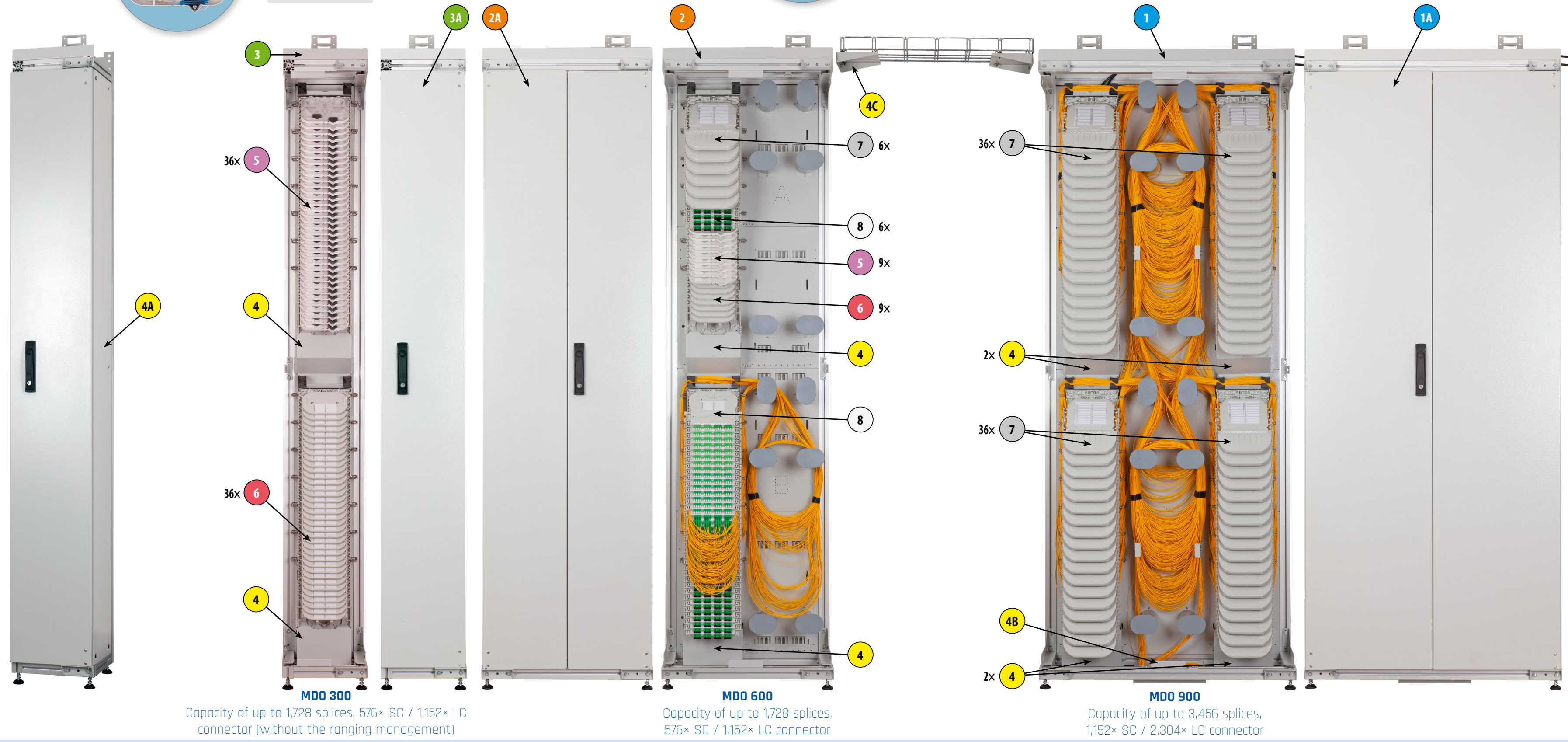


QUANTITY

PRODUCT CATEGORY (COLOR FOR BETTER ORIENTATION)

MARKING, MORE INFO IN PRODUCT TABLE

PRODUCT ID



MDO 300
Capacity of up to 1,728 splices, 576x SC / 1,152x LC connector (without the ranging management)

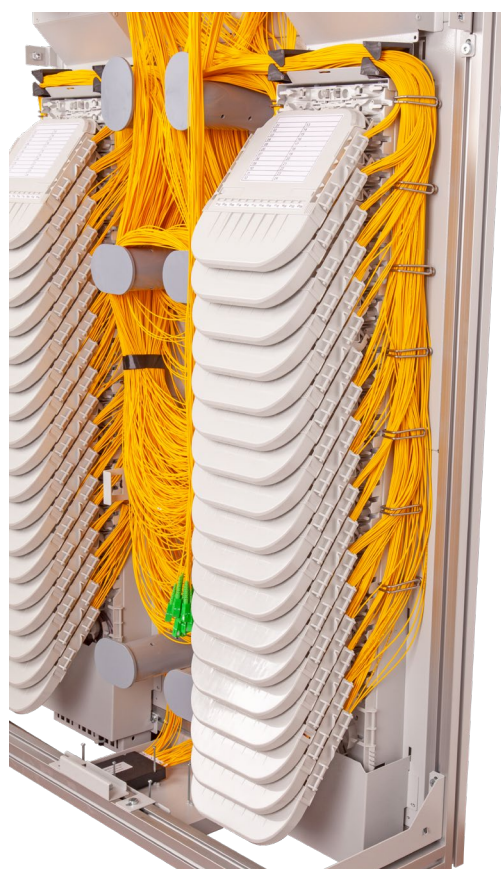
MDO 600
Capacity of up to 1,728 splices, 576x SC / 1,152x LC connector

MDO 900
Capacity of up to 3,456 splices, 1,152x SC / 2,304x LC connector

PRODUCT TABLE

Product ID	Ordering Code	
1	85U5.70/0000F	MDO 900 864/1728 (flat pack)
2	85U5.80/0000F	MDO 600 432/864 (flat pack)
3	85U5.90/0000F	MDO 300 432/864 (flat pack)
1A	85U5.75/0000F	MDO Door 900
2A	85U5.85/0000F	MDO Door 600
3A	85U5.95/0000F	MDO Door 300
4	85U5.20/0000F	MDO Subrack
4A	85U5.60/0000F	MDO Side Cover (2 pcs)
4B	85U5.58/0000F	MDO Splitter Box
4C	85U5.94/0000F	MDO Grate Holder (assembly)

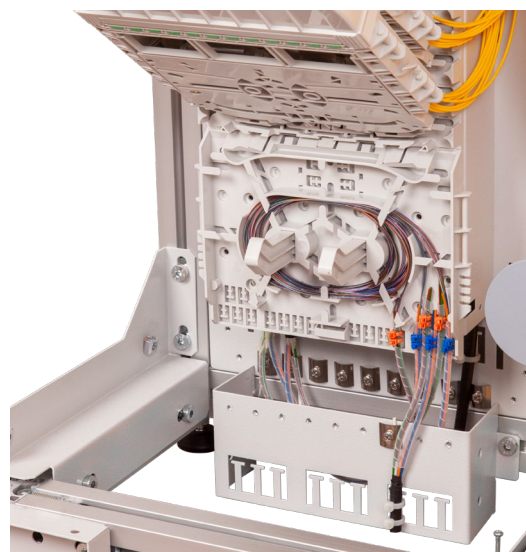
Product ID	Ordering Code	
5	85C3.79/000X	KM 4 Kit for Heat Shrinkable Protection
5A	85C3.82/000X	KM 4 Kit for Crimp Protection
5B	85C3.81/000X	KM 4 Kit for Ribbon Protection
6	85C3.83/000X	KM 6 Kit for Heat Shrinkable Protection
6A	85C3.85/000X	KM 6 Kit for Crimp Protection
6B	85C3.84/000X	KM 6 Kit for Ribbon Protection
7	85AV.94/0000F	KM 5 Kit for Heat Shrinkable Protection
7A	85AV.94/00K2F	KM 5 Kit for Crimp Protection
7B	85AV.94/00R3F	KM 5 Kit for Ribbon Protection
8	85C3.86/000X	KM 7 Kit for Heat Shrinkable Protection
8A	85C3.88/000X	KM 7 Kit for Crimp Protection
8B	85C3.87/000X	KM 7 Kit for Ribbon Protection



KM 5 Tray Patch Cord Outputs



Tilting of KM 5 Trays



Fiber Organizer (Subrack B)

You Tube
Installation Videos



MDO – Flat Pack
Assembly



MDO – Subrack
and Cable Installation



MDO – Installation
of KM 5 Trays



MDO – Interconnection
inside the Cabinet
with Patchcords



MDO – Box for
ABS Splitters



MDO – Cable
Tray Holder

2022-12-07 ver. 0.3 EN