



5G READY

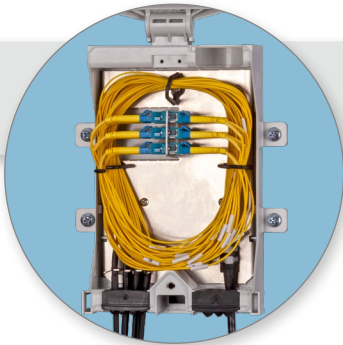
FTTA/5G RRH Connection Solution



FTTA ANTENNA FIBER RRH FAN OUT JUNCTION BOX BASE STATION PRE-TERMINATED BBU 5G RRH BASE STATION FIBER BBU ANTENNA FTTH

FTTA/5G RRH Connection Solution

1



MDB XS 5G 6

- Capacity of up to 12× LC connector
- Support for up to 6 RRHs (remote radio heads)
- Grommets system for cables with diameters 1.8-13 mm
- Grommets can be cut (compatible with connectors)
- Increased durability, impact protection and water / dust ingress resistance (IP65, IK10)
- Integrated pole bracket
- Brackets for fixing cables inside the box
- Support for fixing cables outside the box (on request)

4



Pole Clamp

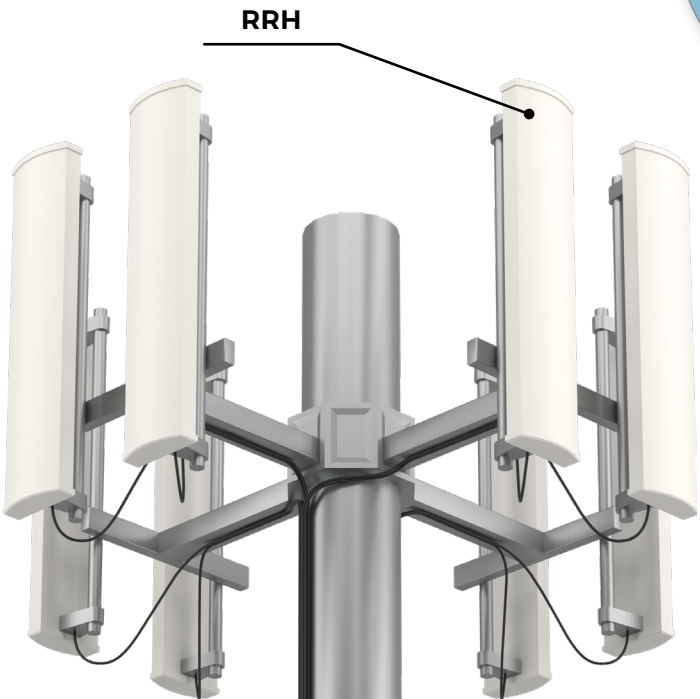
- Fast installation without additional tools
- Various sizes for different pole diameters

7



SAP 4 1500/2000

- 19" technology 20U/31U
- 4 lifting eyelets for crane transport
- Support for cabinet disassembly for transport without a crane
- Fan cooling up to 800 m³/h
- Heating 400 W
- Optional electrical and regulation equipment as required
- BST grommets system (18× 5-12 mm + 16× 13-23 mm)
- Painted steel sheet (aluzinc)



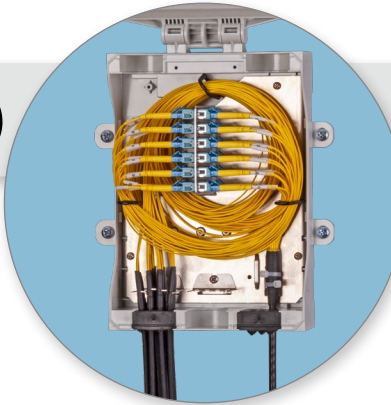
RRH

8× 5

Junction Box

2 4

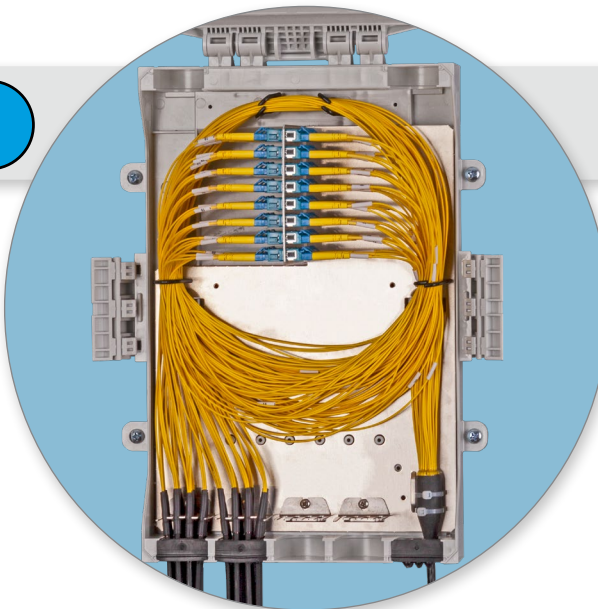
2



MDB S 5G 12

- Capacity of up to 24× LC connector
- Support for up to 12 RRHs (remote radio heads)
- Grommets system for cables with diameters 1.8-13 mm
- Grommets can be cut (compatible with connectors)
- Increased durability, impact protection and water / dust ingress resistance (IP65, IK10)
- Integrated pole bracket
- Brackets for fixing cables inside the box
- Support for fixing cables outside the box (on request)

3



MDB M 5G 24

- Capacity of up to 48× LC connector
- Support for up to 24 RRHs (remote radio heads)
- Grommets system for cables with diameters 1.8-13 mm
- Grommets can be cut (compatible with connectors)
- Increased durability, impact protection and water / dust ingress resistance (IP65, IK10)
- Brackets for fixing cables inside the box
- Support for fixing cables outside the box (on request)

5



Drop Cable

- Produced of high quality components
- LCD side with IP68 protection
- Safe Lock Ring function to prevent unauthorized manipulation
- Max. connector pull out strength 400 N
- UV resistant
- Temperature range -40 °C / +70 °C
- Support for custom modifications

6



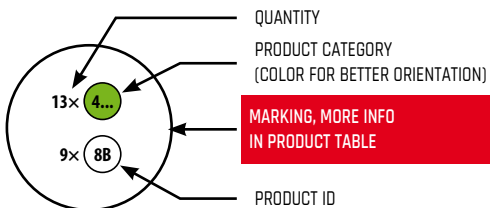
Feeder Cable

- Produced of high quality components
- UV resistant
- Resistant to chemicals
- Simplex or duplex solution
- Temperature range -40 °C / +70 °C
- Support for custom modifications

BBU



6



PRODUCT TABLE

Product ID	Ordering Code	
1	854Y.00/000XF	MDB XS-DF-5G-6LCD
1A	854Y.00/001XF	MDB XS-DF-5G-6LCD-E (without adapters)
1B	854Y.25/000XF	MDB XS-DF-5G-3LCQ
2	854Y.10/000XF	MDB S-DDF-5G-12LCD
2A	854Y.10/001XF	MDB S-DDF-5G-12LCD-E (without adapters)
2B	854Y.30/000XF	MDB S-DDF-5G-6LCQ
3	854Y.20/000XF	MDB M-DDDDF-5G-24LCD
3A	854Y.20/001XF	MDB M-DDDDF-5G-24LCD-E (without adapters)
3B	854Y.40/000XF	MDB M-DDDDF-5G-12LCQ
3C	85E0.97/0000F	Pole Bracket (for MDB M)
4	85BV.49/0145F	Pole Clamp ø 90 max.
4A	85BV.49/0370F	Pole Clamp ø 145 max.
4B	85BV.49/0570F	Pole Clamp ø 370 max.

Product ID	Ordering Code	
5	On request	Cable optical, Drop, 2F, SMF OS2, LC/UPC to IP LCD, 3m
5A	On request	Cable optical, Drop, 2F, SMF OS2, LC/UPC to IP LCD, 5m
6	On request	Cable optical, Feeder, 12F, SMF OS2, LC/UPC to LC/UPC, 20m
6A	On request	Cable optical, Feeder, 12F, SMF OS2, LC/UPC to LC/UPC, 40m
6B	On request	Cable optical, Feeder, 12F, SMF OS2, LC/UPC to LC/UPC, 60m
6C	On request	Cable optical, Feeder, 12F, SMF OS2, LC/UPC to LC/UPC, 80m
6D	On request	Cable optical, Feeder, 12F, SMF OS2, LC/UPC to LC/UPC, 100m
6E	On request	Cable optical, Feeder, 24F, SMF OS2, LC/UPC to LC/UPC, 20m
6F	On request	Cable optical, Feeder, 24F, SMF OS2, LC/UPC to LC/UPC, 40m
6G	On request	Cable optical, Feeder, 24F, SMF OS2, LC/UPC to LC/UPC, 60m
6H	On request	Cable optical, Feeder, 24F, SMF OS2, LC/UPC to LC/UPC, 80m
6I	On request	Cable optical, Feeder, 24F, SMF OS2, LC/UPC to LC/UPC, 100m
6J	On request	Cable optical, Feeder, 48F, SMF OS2, LC/UPC to LC/UPC, 20m
6K	On request	Cable optical, Feeder, 48F, SMF OS2, LC/UPC to LC/UPC, 40m
6L	On request	Cable optical, Feeder, 48F, SMF OS2, LC/UPC to LC/UPC, 60m
6M	On request	Cable optical, Feeder, 48F, SMF OS2, LC/UPC to LC/UPC, 80m
6N	On request	Cable optical, Feeder, 48F, SMF OS2, LC/UPC to LC/UPC, 100m
7	On request	SAP 4 1500
7A	On request	SAP 4 2000

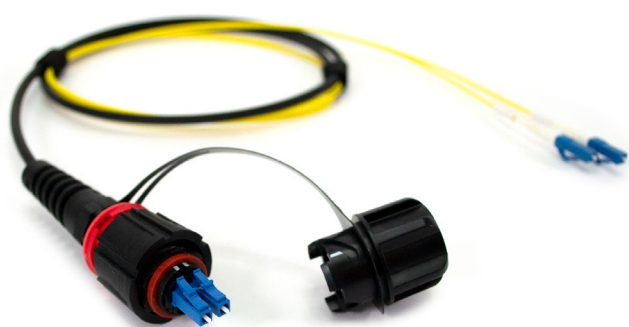
ATTENTION!
Check the Product ID for better orientation
in the solution on the next pages

TECHNICAL DESCRIPTION

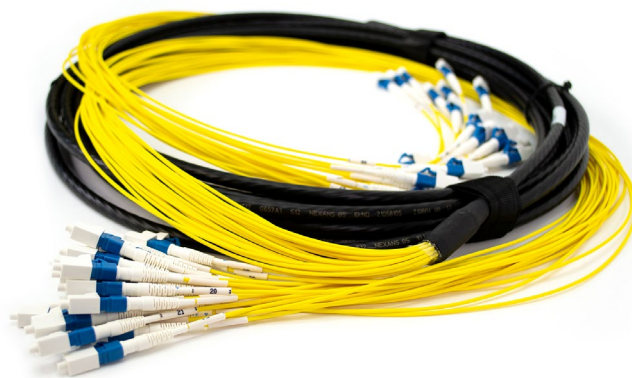
The Fiber Optic Boxes MDB 5G are used as connection points between the RRH (remote radio head) and the BBU (baseband unit). There are also hybrid boxes fitted with a power supply. The fiber optic connection of the RRH is a must for 5G networks. The RRH disconnection point brings many benefits, for example, sharing fibers with more operators or carrying out simple modifications on the pole. The MDB boxes feature a grommet system designed for cables of all diameters.

Between the RRH and MDB 5G box, there is a drop cable of 3 to 5 meters length usually with a duplex LC/UPC connector at the RRH, which has to be adjusted to the used technology. The duplex connector is connected to the adapter panel in the connection box. The connection cable has to be durable enough.

The fronthaul (connection of the BBU and MDB 5G box) is carried out through a pre-terminated feeder cable. The feeder cable can be fitted with a required number of LC/UPC connectors or an MPO connector.



Drop Cable



Feeder Cable