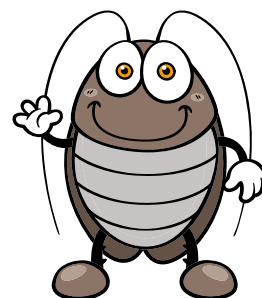




MICOS



FTTH **RISER** Solution with Floor Box



FTTH **RISER** **PON** **RISER** **G.657A** **SC/APC** **PON** **1:8** **FTTH** **PATCHCORD** **1:32** **GPON** **RISER** **G.657A** **SC/APC** **FTTH**
QUICKPUCH **RISER** **PON** **RISER** **SPLITTER PLC** **G.657A** **1:8** **FTTH** **GPON** **RISER** **G.657A** **SC/APC** **FTTH**

TECHNICAL DESCRIPTION

FTTH indoor solution with a riser cable offers a way to quickly and easily build an optical infrastructure in different MDU sizes. The primary cable is spliced into the main MTeH UNI distribution box, where it is terminated or passes through. The fibers of the incoming cable are spliced to the internal riser cables. The required number of fibers determining the number of connectable flats will be spliced directly. The riser cable will be installed as a vertical line in the riser or a new duct in the form of a plastic channel. There will be one MTeH Easy installed to the riser cable for each 12 flats. Cut out a window in the cable and pull out 12 fibers to be spliced to SC/APC pigtails. The last 12 fibers will be terminated in the top floor distribution box. If some of the fibers in the cable are unused, leave them in this distribution box and do not install any riser cables reserve. The customers will be connected via patch cords connected to the floor distribution box and leading to a customer's location where an ORM1 or ONT device socket will be installed. Connect the ONT device and leave patch cord reserve.

The P2P network installed in this way from the customer to the external distribution point, where there is the first splitting level, allows for 100% use of the OLT device ports in the case of GPON construction. When establishing a service, an end-user's port shall be connected to the splitter at the distribution point.

1... The ORM 1 end-user's socket can be equipped with 2 SC/APC adapters. It is used as a distribution point between the network and ONT device in flats.

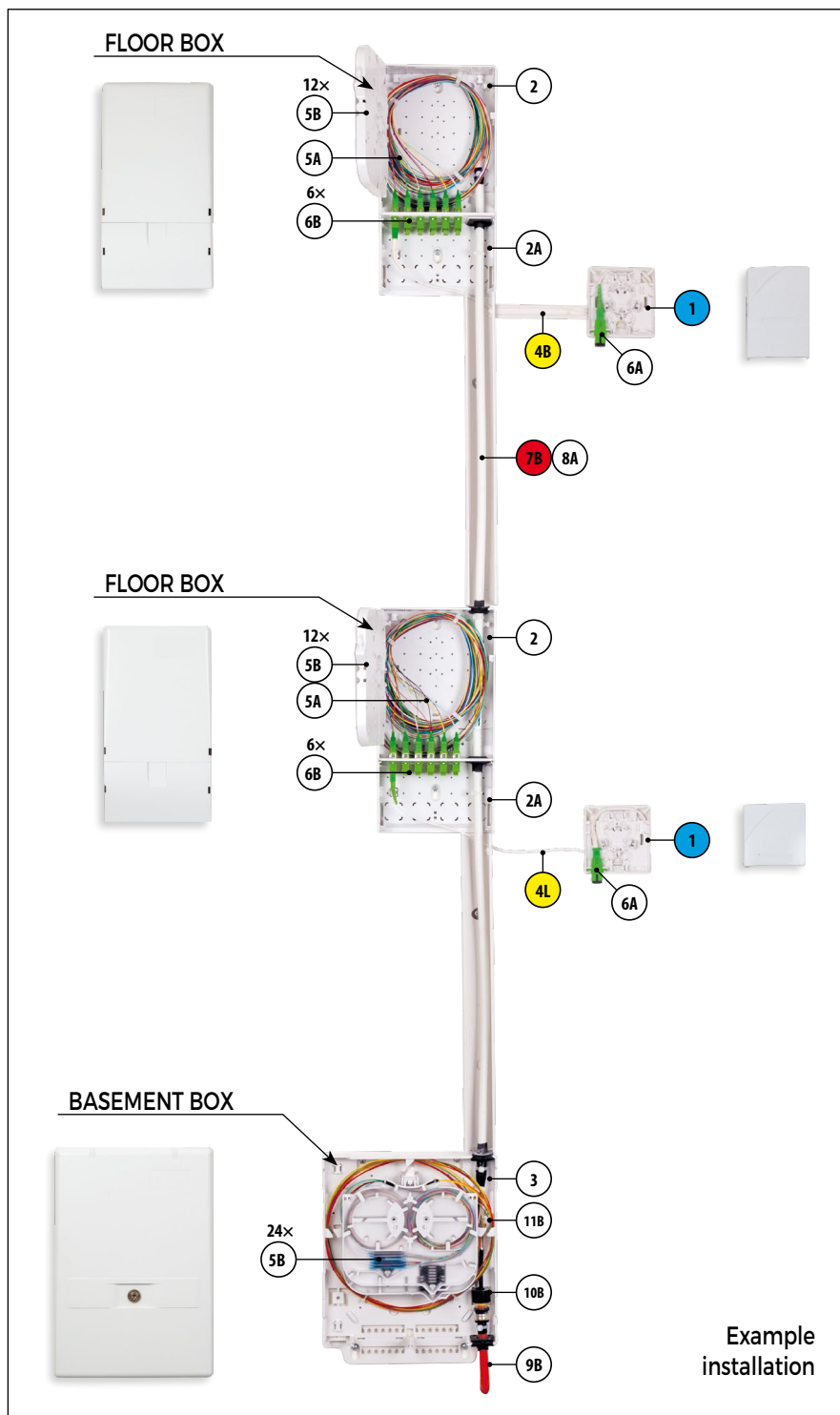
2... The floor distribution box is MTeH Easy with the capacity of 12 SC/APC adapters, through which the cable riser passes, from which 12 fibers are pulled out. The distribution box is provided with a tray for up to 24 splices to pigtails. The reserve installation fibers are fitted to plastic cable eyes distributed all around the box inside. The distribution box must be provided with a connector cover. If necessary, it can be equipped with a splitter up to 1:8 for SC connectors.

3... The main distribution box is MTeH UNI, where the incoming cable is spliced to the inner riser cable in KM4 trays with the maximum capacity of 48 splices. The distribution box accommodates a pass-through cable without fiber interruption and includes cable eyes for installation reserve. The distribution box cover allows for protecting the incoming tubes in the installation of the distribution box on the breakthrough in the building. If necessary, it can be equipped with a splitter up to 1:16 for SC connectors.

4... Two types of patch cords can be used in our solution: The standard ones are more cost-effective and the initial costs are not that high. However, these patch cords have no protective features. Armoured patch cords, on the other hand, feature a very efficient metal protection of the cables. The choice is up to the operator.

7... The riser cables with 12 or 24 fibers G.657A2 with 0.9 mm insulation have the same colour coding as the pigtail set for their easier identification in the floor distribution box.

All the distribution boxes used in this solution allow for doubling the capacity using LC connectors.



FTTH RISER Solution with Floor Box

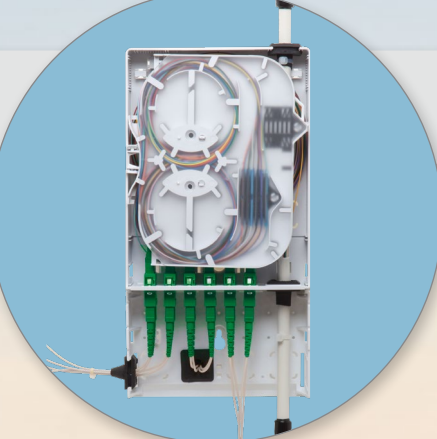
1... **ORM 1**

FTTH OPTICAL OUTLET



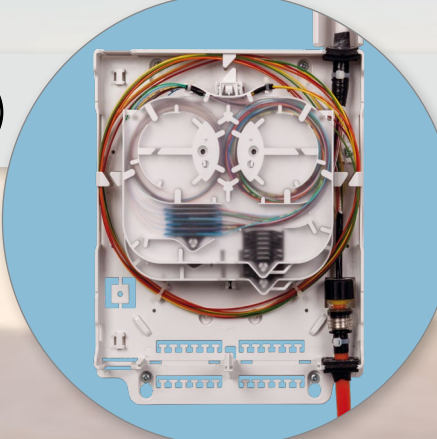
2... **MTEH EASY FLOOR BOX**

- DISTRIBUTION BOX WITH CONNECTORS COVER
- MAX. 24 SPLICES
- MAX. 12 SC/APC ADAPTERS



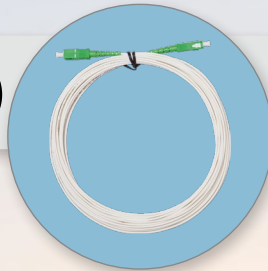
3... **MTEH UNI BASEMENT BOX**

- DISTRIBUTION BOX
- MAX. 48 SPLICES
- MAX. 24 SC/APC ADAPTERS
- LOCKABLE



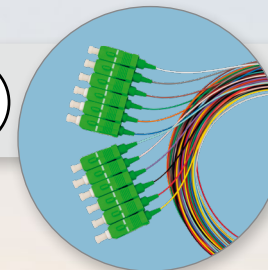
4... **PATCHCORDS**

- PATCHCORDS IN VARIOUS LENGTHS
- STANDARD
- ARMORED



5... **PIGTAIL SET**

SC/APC



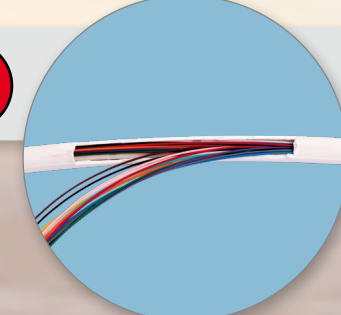
6... **ADAPTERS**

SC/APC



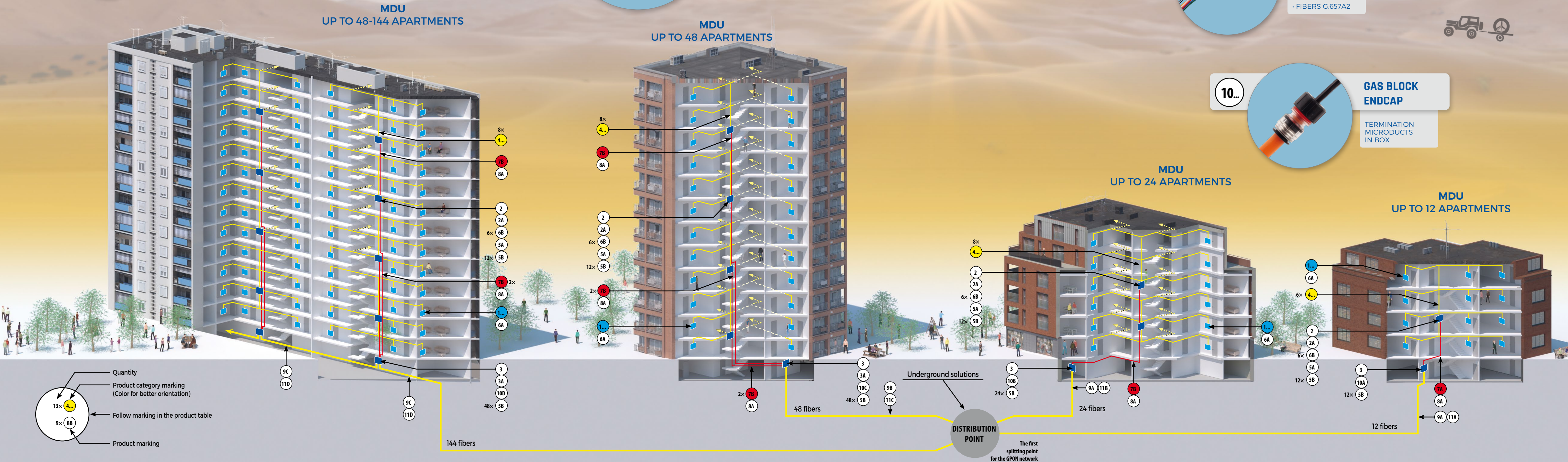

7... **RISER CABLES**

- 12 OR 24 FIBERS
- FIBERS G.657A2



10... **GAS BLOCK ENDCAP**

TERMINATION MICRODUCTS IN BOX



PRODUCT TABLE

1...

Mark	Order code	FTTH mini socket ORM 1
1	85H4.00/0000F	ORM 1

2...

Mark	Order code	Indoor wall-mounted distribution box MTeH EASY
2	85AX.00/0002F	MTTH Easy 24S/12C
2A	85AX.15/0000F	Adapters cover

3...

Mark	Order code	Indoor wall-mounted distribution box MTeH UNI and accessories
3	85AV.00/0001F	MTTH Uni
3A	85SP.02/0000	Gradiated bushing 3–14 mm

4...

Mark	Order code	Standard patchcords
4A	710031	Patchcord SM9/125, SC/APC to SC/APC, SX, 2.0mm, 5m, G.657A1, white
4B	710032	Patchcord SM9/125, SC/APC to SC/APC, SX, 2.0mm, 10m, G.657A1, white
4C	710033	Patchcord SM9/125, SC/APC to SC/APC, SX, 2.0mm, 15m, G.657A1, white
4D	710034	Patchcord SM9/125, SC/APC to SC/APC, SX, 2.0mm, 20m, G.657A1, white
4E	710035	Patchcord SM9/125, SC/APC to SC/APC, SX, 2.0mm, 25m, G.657A1, white
4F	710036	Patchcord SM9/125, SC/APC to SC/APC, SX, 2.0mm, 30m, G.657A1, white
4G	710037	Patchcord SM9/125, SC/APC to SC/APC, SX, 2.0mm, 35m, G.657A1, white
4H	710038	Patchcord SM9/125, SC/APC to SC/APC, SX, 2.0mm, 40m, G.657A1, white
Armored patchcords		
4CH	710023	Patchcord SM9/125, SC/APC to SC/APC, SX, 3.0mm, 5m, G.657A2, white, armored
4I	710024	Patchcord SM9/125, SC/APC to SC/APC, SX, 3.0mm, 10m, G.657A2, white, armored
4J	710025	Patchcord SM9/125, SC/APC to SC/APC, SX, 3.0mm, 15m, G.657A2, white, armored
4K	710026	Patchcord SM9/125, SC/APC to SC/APC, SX, 3.0mm, 20m, G.657A2, white, armored
4L	710027	Patchcord SM9/125, SC/APC to SC/APC, SX, 3.0mm, 25m, G.657A2, white, armored
4M	710028	Patchcord SM9/125, SC/APC to SC/APC, SX, 3.0mm, 30m, G.657A2, white, armored
4N	710029	Patchcord SM9/125, SC/APC to SC/APC, SX, 3.0mm, 35m, G.657A2, white, armored
4O	710030	Patchcord SM9/125, SC/APC to SC/APC, SX, 3.0mm, 40m, G.657A2, white, armored

For other variants, please, contact our sales department



Solutions on the website



Installation video 1
(MTeH Easy)



Installation video 2
(MTeH UNI)

5...

Mark	Order code	Pigtails and heatshrink
5A	CN0075	Pigtail set 12x, SM9/125, SC/APC, 0.9mm, 2m, G.657A1, tight buffer, LSZH
5B	493520	Heatshrink, L = 45 mm, D = 2,4 mm

6...

Mark	Order code	Adapters
6A	CN0002	Adapter SC/APC, SM, SX, green, metal clip, flange
6B	CN0004	Adapter SC/APC, SM, DX, green, metal clip, flange

7...

Mark	Order code	Riser cables
7A	HT0001	Cable optical, Riser, 12vl, G.657A2
7B	HT0002	Cable optical, Riser, 24vl, G.657A2

8...

Mark	Order code	Protection for indoor installations
8A	On request	Plastic channel 40x40

9...

Mark	Order code	Microducts
9A	On request	MT Micro, 10/6, HDPE
9B	On request	MT Micro, 12/8, HDPE
9C	On request	MT Micro, 14/10, HDPE

10...

Mark	Order code	Gas block endcap
10A	710249	MT Gas block endcap, 10, cable 0.5 to 3
10B	710250	MT Gas block endcap, 10, cable 3 to 6
10C	710252	MT Gas block endcap, 12, cable 3 to 6
10D	710256	MT Gas block endcap, 14, cable 6 to 8

11...

Mark	Order code	Optical cables
11A	On request	Cable optical, Micro duct; 12F, G.657A1, Ø 2.8mm, Z006
11B	On request	Cable optical, Micro duct; 24F, G.657A1, Ø 3.2mm, Z238
11C	On request	Cable optical, Micro duct; 48F, G.657A1, Ø 5.8mm, TM01
11D	On request	Cable optical, Micro duct; 144F, G.657A1, Ø 6.2mm, Z024

ATTENTION!
Follow the marking of the products for a better understanding of the solution on the other side.