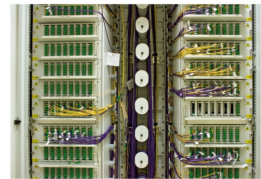
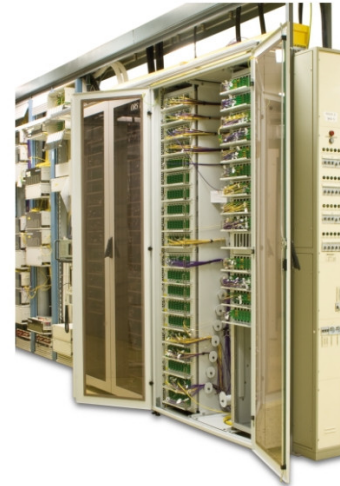


5G READY

The ORS 1/600 optical distribution cabinet is designed for the placement of 1920 optical connectors indoors in a CENTRAL OFFICE. The distribution box allows to terminate and lead out any type of optical cables to main optical node.

- ▶ Capacity of 1920 optical connectors
- ▶ Two separate sections, 20 modules each
- ▶ Module structure (48 optical connectors)
- ▶ Different types of modules (for splice trays, reserves and patchcords)
- ▶ Easy access – double rotation frame (rack,module)
- ▶ E 2000, SC connector panel
- ▶ Placement of up to an 8 m optical fiber reserve
- ▶ Easy module system
- ▶ Easy manipulation with connecting patchcords
- ▶ Frame locking in the open position
- ▶ Recommended patchcord diameter 1.8 mm



TECHNICAL SPECIFICATIONS

| | |
|------------------------|------------------------|
| Material | painted steel sheet |
| Color | light gray RAL 7035 |
| Dimensions (H × W × D) | 2,200 × 1,200 × 600 mm |
| Weight | 215 kg |
| Environment | indoor |
| Number of Splices | 865 and more |
| Number of Connectors | 865 and more |
| Connector Type | SC LC E2000 |

More information: <https://www.micostelcom.com/en/fiber-high-density-cabinets/ors-1-600-optical-distribution-cabinet>