

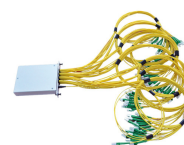
GPON READY

5G READY

ORSM

Optical distribution box ORU 9 SDF SIS is a new generation of street cabinets for PON-type optical network. The cabinet is freestanding, dustproof with the ruggedized structure against damage. Perfectly accessible and flexible. At the same time offers high-quality integrated modular optical management for terminating or connecting of optical cables in micro-ducts or HDPE protecting pipes. The construction of the cabinet allows its using in outdoor environments. The cabinet is installed in an open area in trench.

- ▶ Number of modules 12
- ▶ Capacity of modules 12× SC/E2000/SX or 12× LC/duplex adapters
- ▶ Capacity of max. 144/288 optical splices
- ▶ Maximum connected capacity of subscribers 144 in SC or 288 in LC connectors
- ▶ Number of splitters 6
- ▶ Placement of optical fiber reserve, length 5 m
- ▶ Basement high 600 mm
- ▶ Rubber bushing 6× ø 50 mm
- ▶ Three-point lock of front door
- ▶ Use for fibers G652D, G657A
- ▶ Modular concept
- ▶ Easy assembly and disassembly
- ▶ Safe fixation of micro ducts or HDPE tubes
- ▶ Secure compliance of the prescribed minimum bending radius of optical fibers
- ▶ Removable roof



TECHNICAL SPECIFICATIONS

Inputs / Outputs (quantity × range)	6× 23–46 mm
Grommets (type and number of used grommets)	6× rubber grommet ø 50 mm
Ingress Protection	IP54
Impact Protection	IK10
UV Resistance	yes
Flammability Degree	V0
Material	glass reinforced polyester SMC
Color	light gray RAL 7035
Dimensions (H × W × D)	1600 × 550 × 350 mm
Weight	45 kg

ORDERING CODES

85CP.00/0000F	ORU 9 SDF SIS
85CP.00/00SPF	ORU 9 SDF SIS for ABS splitter
85MF.05/000HF	LGX module for splitter
8508.A4/0000F	Modul for ABS splitter (compatible only with ORU 9 SDF SIS for ABS splitter)
85CP.11/0000	Panel for splitters 4U
85CP.07/0000F	LGX splitter panel

More information: <https://www.micostelcom.com/en/fiber-distribution-hubs/oru-9-sdf-sis-concentrator-pillar-distribution-box>